

## November fly of the month Swiss Straw Stonefly

*By Barry Webster*  
*FWFF Fly Tying Director*

I recently had a windfall accumulation of Swiss Straw in various colors, so I went looking for patterns to tie using the material. Hope you enjoy this pattern.

### Materials

**Hook:** Allen Fly Fishing streamer hook (S402) or equivalent size 6 -14 (tied on a size 10 in the demo)

**Underbody:** 140 or 210 denier white thread to form a taper, .030 lead wire

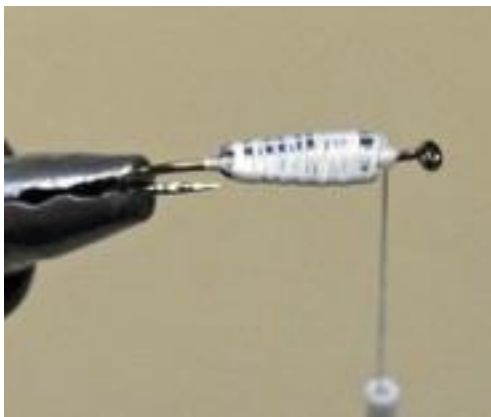
**Tail, antennae, legs:** Turkey biots in color to match actuals

**Dubbing:** any dubbing to match the fly color (I used Peacock Ice Dub in Black)

**Body:** dubbing under wrap, Swiss Straw overwrap, color to match actuals



**Step 1:** Flatten the barb on the hook. Build an underbody of white thread, beginning one eye diameter behind the eye and ending two eye diameters in front of the beginning of the hook b



**Step 2:** Attach two small pieces of lead wire to either side of the underbody thread taper to enhance the underbody tapering shape. Wrap down the lead pieces to hold them in place. You may want to lightly coat the underbody with UV glue to hold everything in place.



**Step 3:** Whip finish the white thread so you can switch to a small diameter black thread (I'm using Veevus 14/0). Create a small thread bump right at the beginning of the hook bend.



**Step 4:** Attach a turkey biot to each side of the hook shank to form a tail. Should be about a hook shank in length. Note that I've used thread to attach the biot tags to the body for additional strength.



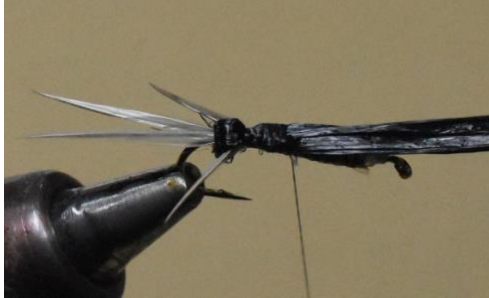
**Step 5:** Select a piece of Swiss Straw about 6 inches long. Split the Swiss Straw along its length to create a piece an appropriate width, as shown. Attach the Swiss Straw at the tail tie-in point. Most of material should be pointing to the rear of the fly, with only enough forward to securely attach the Swiss Straw.



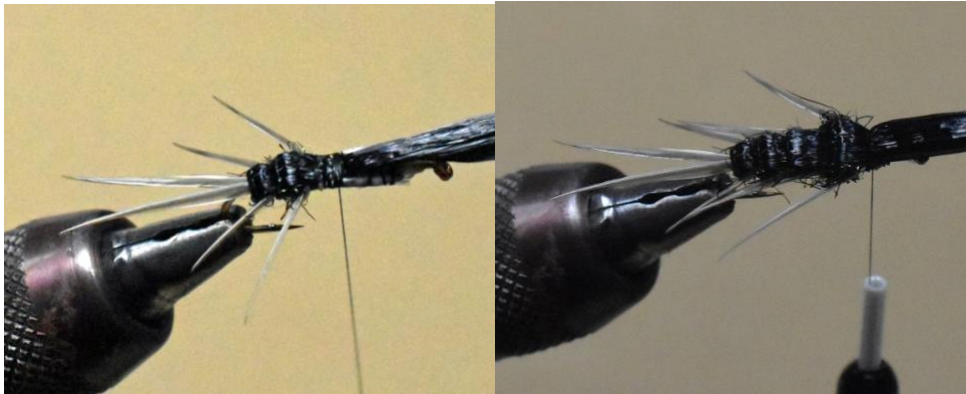
**Step 6:** Make a small noodle of dubbing and wrap to create a ball right on top of the Swiss Straw tie-in point. You will use this dubbing ball to cause the legs (next step) to flair out from the body, so the ball should bulge out from the body.



**Step 7:** To make the rear legs, tie in a turkey biot to each side of the body in front of the dubbing ball, with the leg pointing to the rear, over the dubbing ball. Length of the legs will taper from front to back, so keep that in mind while attaching each successive pair of legs.



**Step 8:** Pull the Swiss Straw forward, over the biot legs and tie in at a point for the next segment. Note that the Swiss Straw is tied in and then lashed down to the body so that it will be under the next segment.



**Step 9:** Repeat steps 6, 7 and 8 to create additional body segments with legs. Repeat until enough body segments have been built to fill the shank of the hook, which was three on this size 10 hook. Leave about two eye diameters for the head segment.



**Step 10:** Bring the Swiss Straw back toward the tail to create a final segment. (Don't trim it yet!) Make a dubbing ball in front of the straw. Tie in a pair of biots *behind* the dubbing ball and pointing forward to create antennae. The ball will make the antennae splay out. Use a small amount of additional dubbing to cover the tie-in points for the antennae.



**Step 11:** Bring the Swiss Straw forward, over the front dubbing ball and antennae and lash the straw to the hook shank, right behind the eye. Work the thread between the antennae and then whip finish to complete the fly. I paint a coat of Sally Hansen Hard as Nails® over the back of the Swiss Straw to lock everything in place and add a little additional sheen to the fly.



Here's a variation tied in another color (with permanent marker highlights).